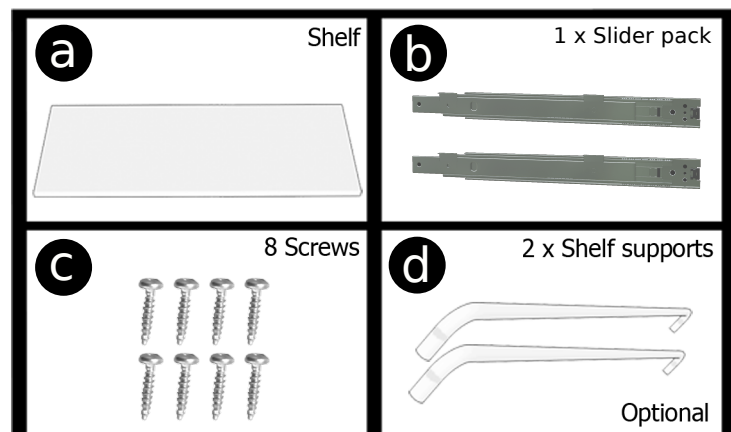


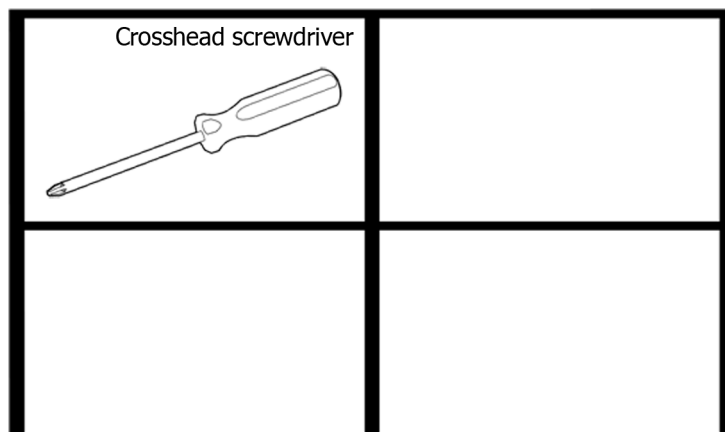
Please read these instructions in full before starting assembly

Sliding shelf

In the pack:

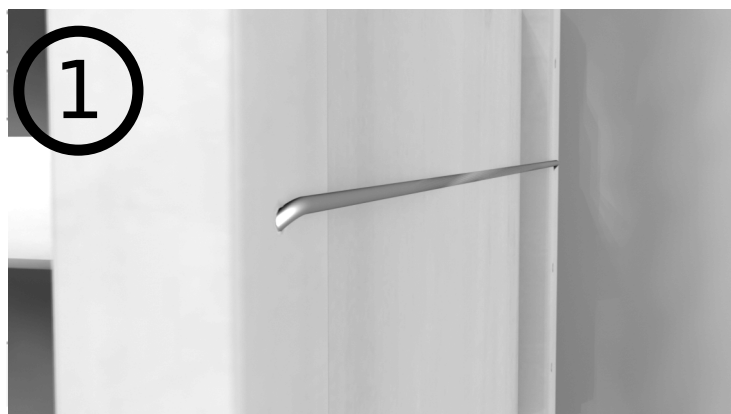


Tools required:



Notes

A shelf support can be used as a guide to ensure the shelf runners are level.



Insert a shelf support **d** into the upright where you would like your shelf **a** to be (for a guide).
(Optional)



Rest a slider **b** on top of the shelf support **d** ensuring that it is aligned with the back of the upright.
(Hold in place)



Open the slider **b** to reveal the screw hole and fix with a screw **c** to the back of the upright.

Please read these instructions in full before starting assembly

Sliding shelf

Notes

4



Open the slider **b** further to reveal the front hole and fix with a screw. **c**

5



Repeat steps 1 to 4 for the opposite side.

6



Bring in the shelf **a** and make sure it is aligned with the front edges of the sliders **b** and symmetrical on left and right sides.

7



Secure the shelf **a** with screws **c** to complete the installation.